

## Creating an AIX print queue from a Windows print queue

For this guide, I will be setup the queue with the following details:

Windows queue name: LexT612

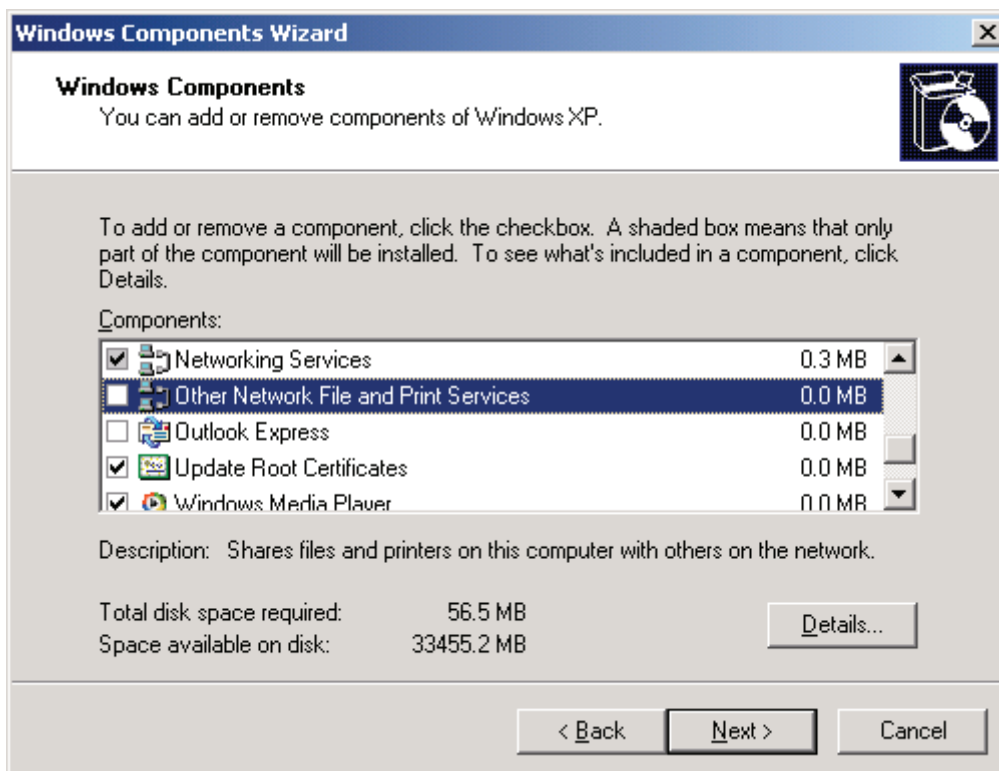
Windows hostname: sydprrsvr

AIX queue name: T612

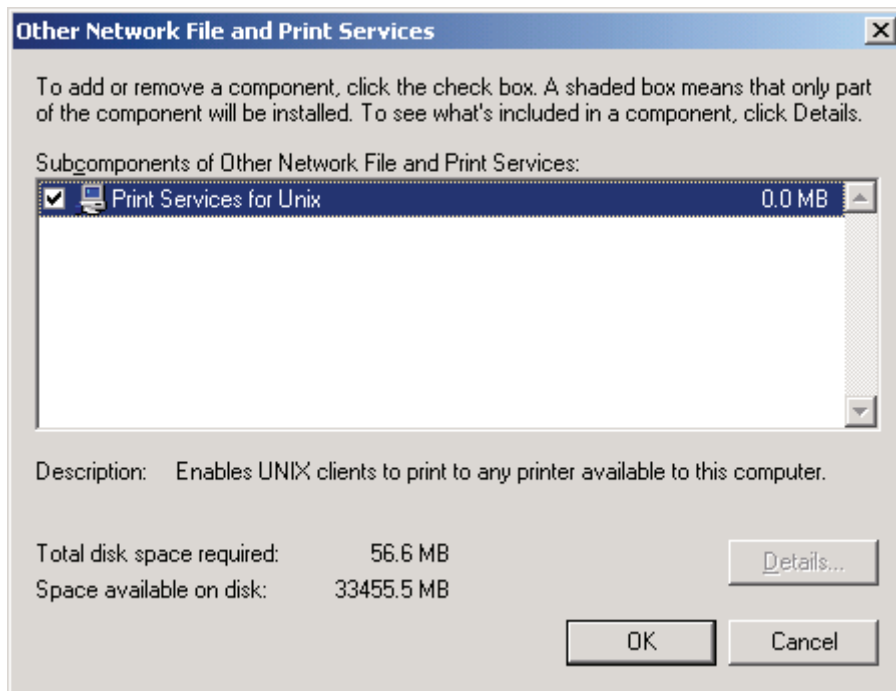
On the windows system, install **Print Services for Unix** by going to:

- Control Panel
- Add or Remove Programs
- Add/Remove Windows Components

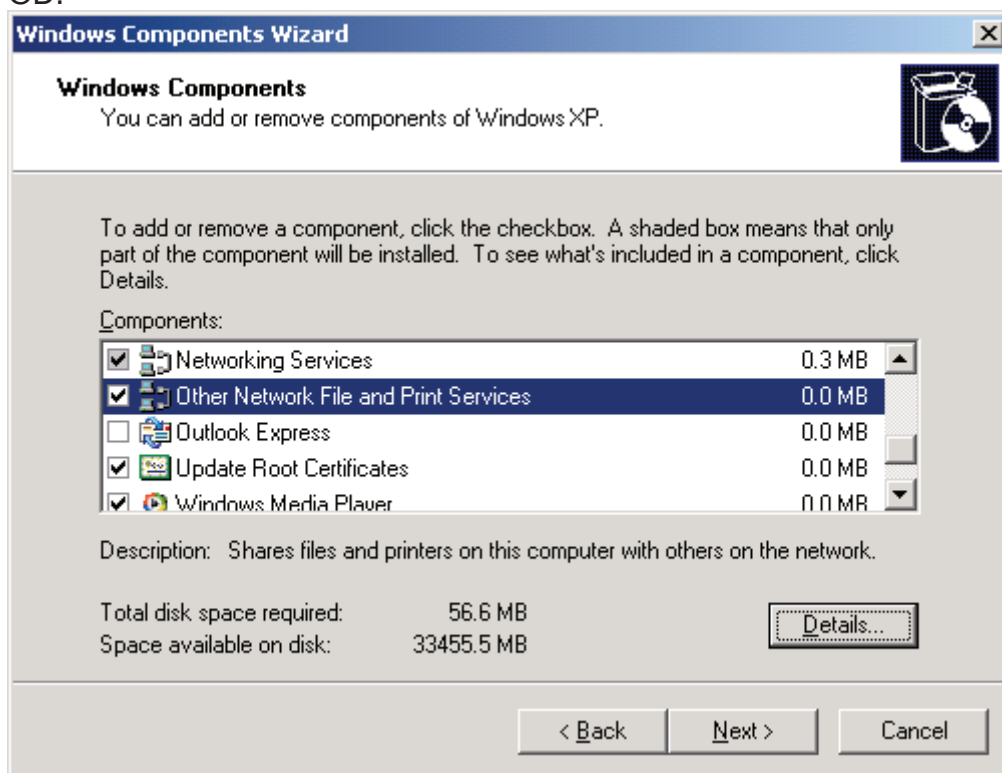
Find and highlight **Other Network File and Print Services**, then click **Details**



Tick **Print Services for Unix** then OK:



Finally click **Next** to finish the install. You may be prompted for the Windows Installation CD.



From the AIX system, run as root:  
smitty spooler

Then select:

- Add a Print Queue
- remote
- Standard processing

Add the queue details as shown below. Be sure to set the queue type to BSD.

```
10.0.2.40 - PuTTY
Add a Standard Remote Print Queue

Type or select values in entry fields.
Press Enter AFTER making all desired changes.

[Entry Fields]
* Name of QUEUE to add          [T612]
* HOSTNAME of remote server    [sydprrtsvr]
* Name of QUEUE on remote server [LexT612]
Type of print spooler on remote server BSD +
Backend TIME OUT period (minutes) [] #
Send control file first?       no +
To turn on debugging, specify output file pathname []
DESCRIPTION of printer on remote server []

F1=Help      F2=Refresh   F3=Cancel    F4=List
Esc+5=Reset  Esc+6=Command Esc+7=Edit   Esc+8=Image
Esc+9=Shell  Esc+0=Exit   Enter=Do
```

Once the queue has been created, verify the queue is ready by running. You should see queue information from the Windows LPD Server. Then finally print to the queue:

```
10.0.2.40 - PuTTY
root@B50:/ # qchk -P T612
Queue  Dev  Status  Job Files  User  PP %  Blks  Cp Rnk
-----
T612   @sydp  READY
T612:
T612:           Windows XP LPD Server
T612:           Printer \\10.0.0.154\LexT612
T612:
T612: Owner      Status      Jobname      Job-Id  Size  Pages  Priority
T612: -----
root@B50:/ # lp -d T612 testprint
root@B50:/ # █
```